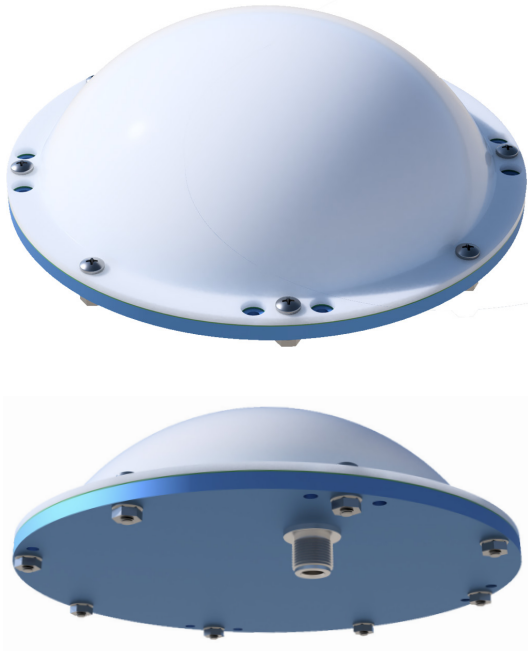


D-Dot Sensor

ELECTRIC FIELD SENSOR



D-Dot Electric Field Sensor

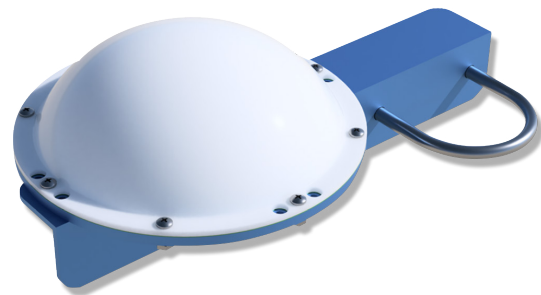
SLS' sleek, weather-proof electric field derivative (D-dot) sensor accurately senses lightning-radiated electric field changes. The sensor detects preliminary breakdown and intracloud electric field impulses during lightning initiation, strong transient electric field signals related to downward leader propagation, and the extraordinarily large electric field change associated with the ground attachment and return stroke of close cloud-to-ground discharges.



D-DOT INSTALLATION KENNEDY SPACE CENTER LC-39B

SPECIFICATIONS

MODEL	SR-DDT-105-GP-04
SENSITIVITY	105.5 kV/m/ μ s/V
OUTPUT	Single-Ended
CONNECTOR	Female N-Type
BANDWIDTH	> 25 MHz
MOUNTING	Horizontal, Pole, Custom
SENSING ELEMENT	353 Brass
INSULATION	PVC
GROUND PLATE MATERIAL	6061 Aluminum or 316 Stainless Steel
GROUND PLATE COATING	Anodized
PROTECTIVE DOME	Fiberglass
SENSING PLATE Ø	0.165 m
ANALOG INTEGRATION	Optional



EXAMPLE MOUNTING CONFIGURATION

